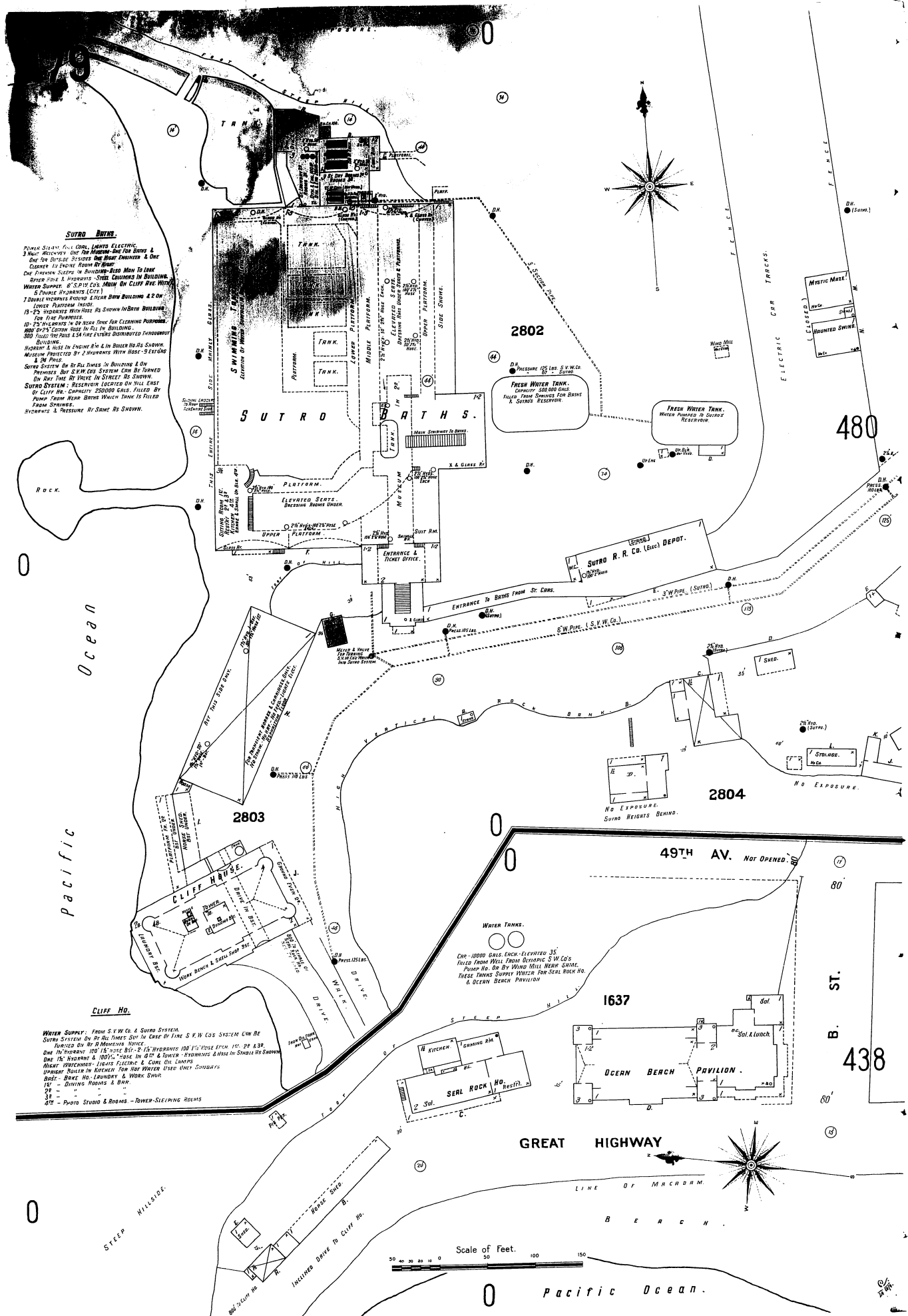


**SUTRO BATHS.**

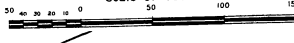
POWER SUPPLY FULL COAL LIGHTS ELECTRIC.  
 3 Night Watchmen and Two Attendants for Suits &  
 One for Outside besides One Head Engineer & One  
 Cleaner 12 Engine Room by Night.  
 One Prisoner Sleeping in Shower-Room Men to Lamp  
 Water Supply: 8 S.P.W. Co. Main on Cliff Ave. West  
 5 Double Hydrants (C.C.)  
 3 Double Hydrants Around Lighter Barn Building & 2 on  
 Lower Platform Road.  
 15-25 Hydrants with Hose for Shower in Bath Building  
 for the purposes.  
 10-15 Hydrants in the House for Cleaning Purposes.  
 100-125 Cotton Hose in all in Building.  
 300-400 Feet of Hose & 500-600 Feet of Hose in  
 Building.  
 Hydrant & Hose in Engine Rm. & in Boiler Rm. as shown.  
 Hydrant protected by 2 Hydrants with Hose - 9 Extensions  
 & 20 Feet.  
 SUTRO SYSTEM ON ALL TIMES IN BUILDING & ON  
 PREMISES BUT S.W. CO. SYSTEM CAN BE TURNED  
 ON ANY TIME BY VALVE IN STREET OR SHOWER.  
 SUTRO SYSTEM: RESERVOIR LOCATED ON HILL EAST  
 OF CLIFF RD. CAPACITY 250000 GALS. FILLED BY  
 PUMP FROM MAIN BATHS WHICH TANK IS FILLED  
 FROM SPRINGS.  
 Hydrants & Pressure as Same as SHOWN.

**CLIFF HO.**

WATER SUPPLY: FROM S.W. CO. & SUTRO SYSTEM.  
 SUTRO SYSTEM ON ALL TIMES ON IN CASE OF FIRE S.W. CO. SYSTEM CAN BE  
 TURNED ON BY A MOMENTARY VALVE.  
 One 10 Hydrant 100' 15" COIL HOSE 1 1/2" HOSE FROM 15' 20' 43P.  
 One 15' Hydrant & 200' 1" HOSE IN 27' & TOWER - HYDRANTS & HOSE IN SHOWER ROOM SHOWN.  
 Night Watchmen - Light Electric & Coal Oil Lamps  
 Urinal Station in Kitchen for Hot Water Steel Only - CHINA  
 HOSE - DRAIN HO. LAUNDRY & WORK SHED.  
 1st - Dining Rooms & Bath  
 2d - " " " " " "  
 3d - " " " " " "  
 4th - Photo Studio & Rooms - Tower - Sleeping Rooms



Scale of Feet.



Pacific Ocean.