

THE EXAMINER, SAN FRANCISCO, FRIDAY MORNING, APRIL 17, 1891.

TO HONOR THE PRESIDENT.

A Proposed Illumination of the Islands, Hills and Wharves.

THE FINANCES FORTHCOMING.

A Glimpse at the Budget Appropriation.

President Harrison's own explanation of the proposed illumination of the islands, hills and wharves, by him to a prominent of the city, as follows:
The view is to the effect that the city, and not only to the Pacific coast, is largely one of nature rather than of man.

THE FINANCIAL PART OF IT.

The one element of the committee pointed to President Harrison is money. A great desideratum is to enter the proposed illumination.
The Finance Committee met yesterday

ROOM AT THE PALACE HOTEL IN WHICH PRESIDENT HARRISON WILL HOLD HIS EXECUTION.

Accompanied the results of their labor. Among those present were Louis S. Case, Charles H. Fisher, C. H. Fisher and C. H. Fisher. It was reported that \$2,000 of the \$10,000 needed by the Finance Committee had been secured by the committee.

THE PRESIDENT'S ADDRESS.

The President's address will be held in the room at the Palace Hotel in which he will hold his execution. The address will be held in the room at the Palace Hotel in which he will hold his execution.

HARRISON'S TOUR.

President Harrison's tour will be held in the room at the Palace Hotel in which he will hold his execution. The tour will be held in the room at the Palace Hotel in which he will hold his execution.

HIS SHARE OF THE MONEY.

Taylor Wants the Senators to Pay What They Owe Him.

Senator Taylor has asked the Finance Committee to pay him the money he is owed. He has asked the Finance Committee to pay him the money he is owed.

GREAT EXPECTATIONS.

Professor Schrafer Says That He Has Landed the Treasurer.

Professor Schrafer has landed the Treasurer. He has landed the Treasurer. He has landed the Treasurer.

NO RIGHT-OF-WAY WAR.

The Lumbermen Will Vow That Ground They Have Made.

The lumbermen will vow that ground they have made. They will vow that ground they have made. They will vow that ground they have made.

HOW THEY GOT HIS VOTE.

Was School Director Pennington Made to Oppose O'Connor?

Was School Director Pennington made to oppose O'Connor? The School Director Pennington was made to oppose O'Connor.

THE ROMANCE OF THE JANTREES.

The romance of the Jantrees. The romance of the Jantrees. The romance of the Jantrees.

SINKING A SNAKE OVER THE BOX.

CITY TINKERING ON THE FRONT.

City tinkering on the front. City tinkering on the front. City tinkering on the front.

THE BUREAU ELECTIVE MAN.

The bureau elective man. The bureau elective man. The bureau elective man.

THE BUREAU ELECTIVE MAN.

The bureau elective man. The bureau elective man. The bureau elective man.

THE BUREAU ELECTIVE MAN.

The bureau elective man. The bureau elective man. The bureau elective man.

THE BUREAU ELECTIVE MAN.

The bureau elective man. The bureau elective man. The bureau elective man.

THE BUREAU ELECTIVE MAN.

The bureau elective man. The bureau elective man. The bureau elective man.

THE BUREAU ELECTIVE MAN.

The bureau elective man. The bureau elective man. The bureau elective man.

THE BUREAU ELECTIVE MAN.

The bureau elective man. The bureau elective man. The bureau elective man.

THE BUREAU ELECTIVE MAN.

The bureau elective man. The bureau elective man. The bureau elective man.

THE BUREAU ELECTIVE MAN.

The bureau elective man. The bureau elective man. The bureau elective man.

THE BUREAU ELECTIVE MAN.

The bureau elective man. The bureau elective man. The bureau elective man.

THE BUREAU ELECTIVE MAN.

The bureau elective man. The bureau elective man. The bureau elective man.

THE BUREAU ELECTIVE MAN.

The bureau elective man. The bureau elective man. The bureau elective man.

THE BUREAU ELECTIVE MAN.

The bureau elective man. The bureau elective man. The bureau elective man.

THE BUREAU ELECTIVE MAN.

The bureau elective man. The bureau elective man. The bureau elective man.

THE BUREAU ELECTIVE MAN.

The bureau elective man. The bureau elective man. The bureau elective man.

THE BUREAU ELECTIVE MAN.

The bureau elective man. The bureau elective man. The bureau elective man.

THE BUREAU ELECTIVE MAN.

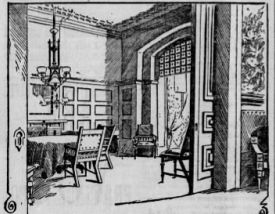
The bureau elective man. The bureau elective man. The bureau elective man.

THE BUREAU ELECTIVE MAN.

The bureau elective man. The bureau elective man. The bureau elective man.

THE BUREAU ELECTIVE MAN.

The bureau elective man. The bureau elective man. The bureau elective man.



Watches advertisement for Geo. C. Shreve & Co. featuring a pocket watch illustration and text: 'We call Special Attention to our GEO. C. SHREVE & CO. GENTLEMEN'S \$100 & GOLD WATCHES'.

Beecham's Pills advertisement with a circular logo and text: 'BEECHAM'S PILLS FOR RHEUMATISM, GOUT, GRAVEL, NEURALGIA, MIGRAINE, HEADACHE, BRUISES, SWELLINGS, AND ALL AFFECTIONS OF THE BLOOD'.

Advertisement for 'The Celebrated French Cure' for various ailments, including 'BILIOUS-NERVOUS DISORDERS, Weak Stomach, Impaired Digestion, Disordered Liver, &c.'.